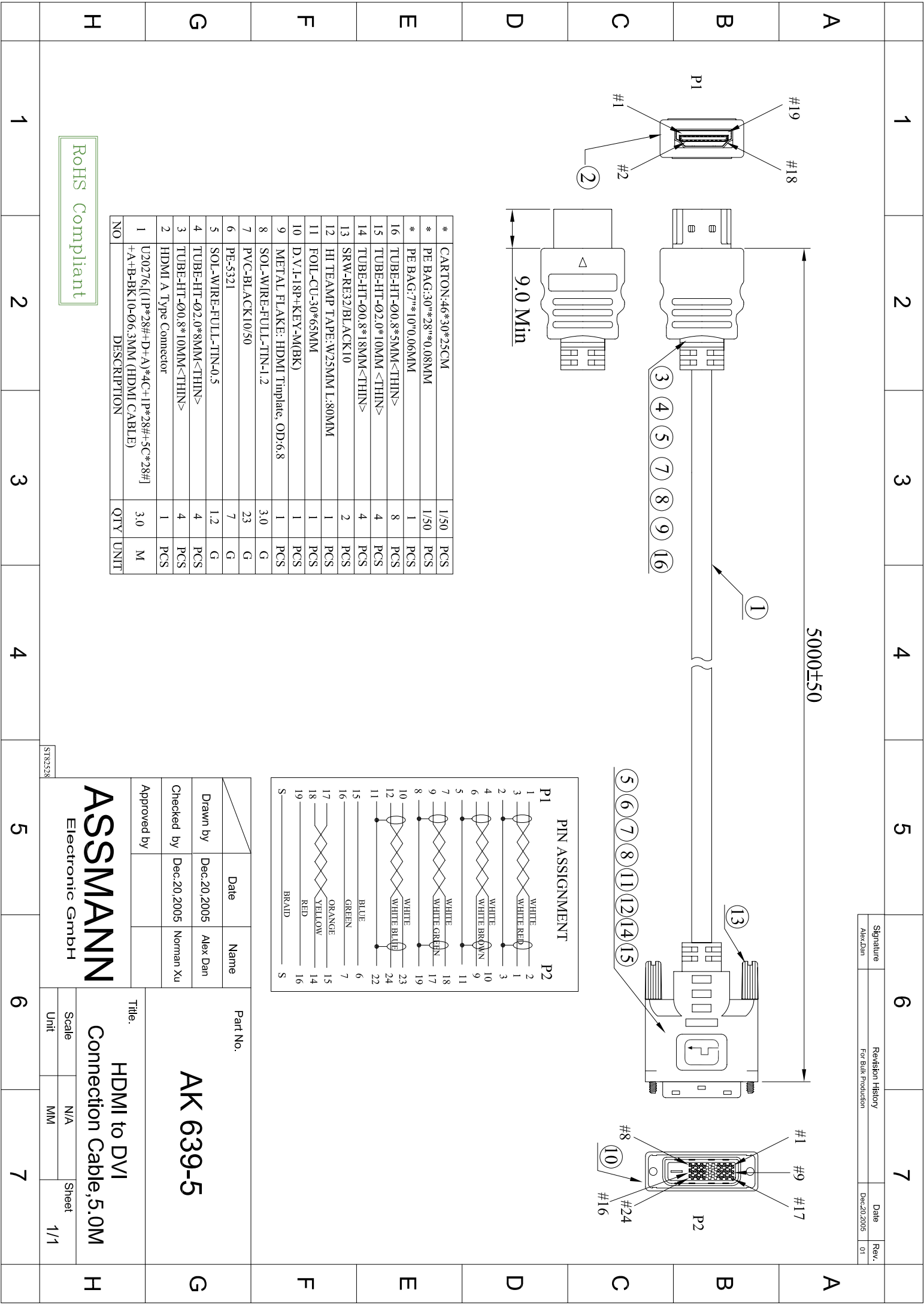
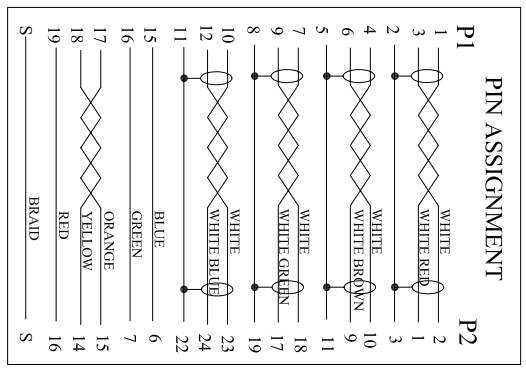


Signature	Revision History	Date	Rev.
Alex.Dan	For Bulk Production	Dec:20,2005	01



* CARTON:46*30*25CM	1/50	PCS
* PE BAG:30**28**0.08MM	1/50	PCS
* PE BAG:7**10*0.06MM	1	PCS
16 TUBE-HT-Ø0.8*5MM<THIN>	8	PCS
15 TUBE-HT-Ø2.0*10MM <THIN>	4	PCS
14 TUBE-HT-Ø0.8*18MM<THIN>	4	PCS
13 SRW-RE32/BLACK10	2	PCS
12 HI TEAMP TAPE:W25MM L:80MM	1	PCS
11 FOIL-CU-30*65MM	1	PCS
10 D.V.I-18P+KEY-M(BK)	1	PCS
9 METAL FLAKE: HDMI Template, OD:6.8	1	PCS
8 SOL-WIRE-FULL-TIN-I.2	3.0	G
7 PVC-BLACK10/50	23	G
6 PE-5321	7	G
5 SOL-WIRE-FULL-TIN-0.5	1.2	G
4 TUBE-HT-Ø2.0*8MM<THIN>	4	PCS
3 TUBE-HT-Ø0.8*10MM<THIN>	4	PCS
2 HDMI A Type Connector	1	PCS
1 U20276,[(1P*28#+D+A)*4C+(1P*28#+5C*28#)] +A+B-BK10-Ø6.3MM (HDMI CABLE)	3.0	M
NO DESCRIPTION	QTY	UNIT



Drawn by	Dec.20,2005	Alex Dan
Checked by	Dec.20,2005	Norman Xu
Approved by		

Part No.	AK 639-5
Title.	HDMI to DVI Connection Cable,5.0M
Scale	N/A
Unit	MM
Sheet	1/1

RoHS Compliant

1	2	3	4	5	6	7
H	G	F	E	D	C	B